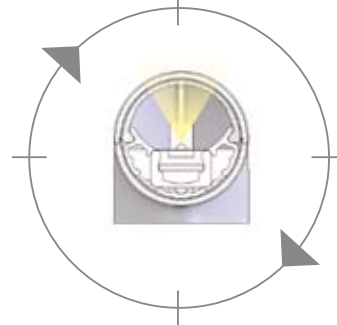


■ Spiro (LLI)

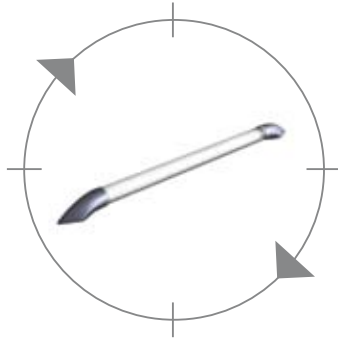
- Rotational through 160°
- Long life super flux LEDs
- LEDs encapsulated to IP66
- Integrated on/off rocker switch

Internal View

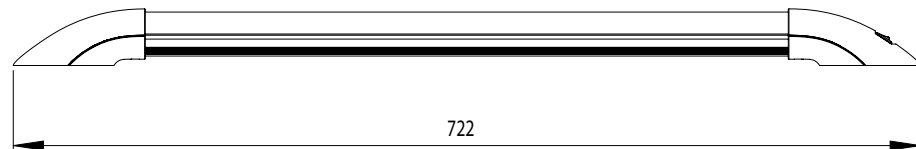
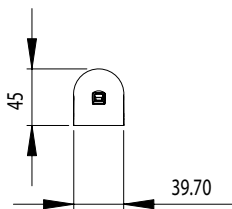


|| See technical specifications overleaf >>>

**SPIRO
(LLI)**



The Spiro incorporates the Orion strip in a swivel housing designed to illuminate any area where a rotational light source is required or desired. The Spiro was originally designed for use above the sink area in the kitchen where the direction of the light could be altered to suit the task in hand, but can also be fitted as bunk reading lights for example. There are no electronic circuits thereby eliminating any corrosion which can occur in humid environments, and the 30 x high intensity LEDs are encapsulated in a waterproof sub-housing enclosure making this the perfect lighting solution for kitchens and bathrooms. The internal LED strip is also protected by a tough polycarbonate lens which not only distributes the light evenly but also protects the unit from damage. This unit also incorporates an integrated on/off rocker switch which fits neatly into the end cap.



SPECIFICATION

ALL DIMENSIONS HAVE A TOLERANCE OF +/- 1mm

**SPIRO
(LLI)**

Model No		LLI	LLI/2
Supply Voltage	Vdc	12	24
Voltage Range	Vdc	10 to 16	20 to 32
Average Current	A	0.18	0.09
LUX @ 1 Metre	LUX	35	35
Tube/Bulb/LEDs	W	22W	22W
Weight	Kg	0.14	0.14
Temp. Range	°C	-30 to +40	-30 to +40

E & OE